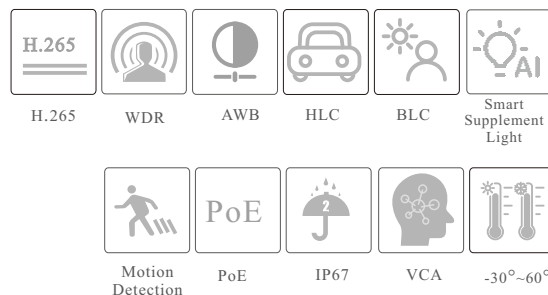


# VSC IPT6BLe4F28

## 6MP Dual-illumination Bullet Network Camera



- H.265S/ H.265+/H.265/H.264S/H.264 +/H.264 coding
- Max. resolution: 3296 × 1856
- 30~40m white light view distance; 30~50 IR view distance
- Support smart supplement light
- ICR auto switch, true day / night vision
- 3D DNR, WDR, HLC, BLC, Smart IR and ROI coding
- Support electronic image stabilization
- Built-in micro SD card slot; up to 512G
- DC12V/PoE power supply
- IP 67 ingress protection
- Support three streams
- Support P2P function
- Support SMD
- Support remote monitoring by smart phones & tablet PCs with iOS and Android OS
- Intelligent analytics

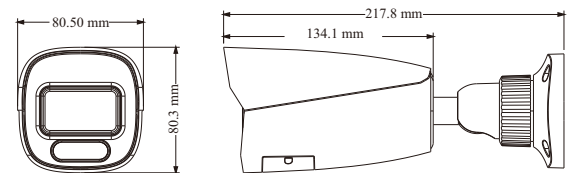


## SPECIFICATIONS

Specifications	Model	VSC IPT6BL4F28		
<b>Camera</b>				
Image Sensor		1 / 2.5 "CMOS		
Max. Resolution		3296 × 1856		
Electronic Shutter		1 / 3s ~ 1 / 100000 s		
Iris Type		Fixed Iris		
Min. Illumination		0.008 lux @F1.6, AGC ON; 0 lux with illumination on		
S/N Ratio		≥50dB		
Lens		2.8 mm@F1.6, H.FoV: 104.5°; V.FoV: 54.5°; D.FoV: 130.5°		
Focus		Fixed		
Lens Mount		M12		
Wide Dynamic Range		120dB		
BLC		Yes		
HLC		Yes		
Defog		Yes		
Digital NR		3D DNR		
EIS		Yes		
Angle Adjustment		Pan: 0°~360°; Tilt: 0°~90°; Rotation: 0°~360°		
<b>Image</b>				
Video Compression		Main stream: H.265S/ H.265+ / H.265 / H.264S / H.264+ / H.264 Sub stream: H.265+ / H.265 / H.264+ / H.264 / MJPEG Third stream: H.265+ / H.265 / H.264+ / H.264 / MJPEG		
H.264 Compression Standard		Baseline Profile/Main Profile/High Profile		
Resolution		6MP (3296×1856), 3K(3200×1800), 4MP (2688×1520), 2K (2560×1440), 1080P (1920×1080), 720P (1280×720), D1, VGA (640×480), 640×360, CIF, 480×240		
Main Stream		6MP/3K/4MP/2K/1080P( 60Hz: 1~30fps; 50Hz: 1~25fps )		
Sub Stream		1080P (60Hz: 1~15fps; 50Hz: 1~15fps) / 720P/D1/VGA/640×360/CIF/480×240 ( 60Hz: 1~30fps; 50Hz: 1~25fps )		
Third Stream		720P/D1/CIF/480×240 ( 60Hz: 1~30fps; 50Hz: 1~25fps )		
Bit Rate		32 Kbps ~ 10 Mbps		
Bit Rate Type		VBR / CBR		
Audio Compression		G711A / U		
Image Settings		ROI, Saturation, Brightness, Hue, Contrast, Wide Dynamic, Sharpness, Image Flip, Image Mirror, NR, etc. adjustable through client software or web browser		
ROI		8 ROI, each ROI to be configured separately		
<b>Interfaces</b>				
Network		RJ 45 10/100M self-adaptive Ethernet port		
Video Output		No		
Audio		1CH audio input; 1CH audio output; 1CH built-in microphone		
Storage		Built-in micro SD card slot; up to 512G		
Reset		Yes		
Alarm		1CH alarm input; 1CH alarm output		
<b>Intelligent Analytics</b>				
Smart Event		Line crossing/ region intrusion/entrance/exiting (human/vehicle classification), loitering detection, illegal parking detection, abandoned/missing object detection		
Statistics		Target counting by line/area, heat map		
Exception Detection		Scene change, video blur and abnormal color detection, audio exception		
Face Detection		Face detection and face capture		
Video Metadata		Simultaneously captures human body, motor vehicle and non-motor vehicle and extracts 13 human features, 5 motor vehicle features and 1 non-motor vehicle feature		
<b>DORI Distance</b>				
Lens	Detect	Observe	Recognize	Identify
2.8mm	70m(229ft)	28m(92ft)	14m(46ft)	7m(23ft)
<b>Functions</b>				
Remote Monitoring		Web Client/ NVR/NVMS/mobile APP		
Web Browser		IE11 (plug-in required)/Chrome 92.0+/Edge 92.0+/Firefox 91.0+/Safari 13.1+		
Online Connection		Support simultaneous monitoring for up to 10 users; Support multi-stream real time transmission		

Network Protocol	UDP, IPv4, IPv6, DHCP, NTP, RTSP, RTP, RTCP, RTMP, FTP, PPPoE, DDNS, SMTP, SNMP, HTTP, 802.1x, UPnP, HTTPS, HTTP POST, P2P, QoS
Interface Protocol	ONVIF
Storage	Network remote storage; micro SD card storage
Smart Alarm	Motion detection, SMD, sensor alarm, SD card error, SD card full, IP address conflict, cable disconnection
General Function	Watermark, video mask, heartbeat, image distortion correction, smart IR, smart supplement light, system backup, corridor pattern, ANR
Security	Firmware encryption, HTTPs encryption, configuration encryption, illegal login lock, IP address filtering, 802.1x authentication, basic and digest authentication for HTTP
PoE	Yes, IEEE802.3af
Supplement Light Range	IR range: 30 ~ 50 m; white light range: 30 ~ 40 m
Ingress Protection	IP 67
<b>Others</b>	
Power Supply	DC12V/PoE
Power Consumption	< 10W
Storage Conditions	- 30 °C ~ 65 °C (-22°F ~ 149°F), Humidity: less than 95 % (non-condensing)
Operating Conditions	- 30 °C ~ 60 °C (-22°F ~ 140°F), Humidity: less than 95 % (non-condensing)
Dimensions ( mm )	217.8 × 80.5 × 80.3
Weight ( net )	Approx. 0.672KG
Installation	Ceiling mounting; Wall mounting
Certificate	CE, FCC
Environmental Protection	Directive EU RoHS, WEEE(2012/19/EU), directive 94/62/EC and REACH(EC1907/2006)

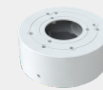
## DIMENSIONS



## AVAILABLE ACCESSORIES



VSB IPT9



VSB IPT12