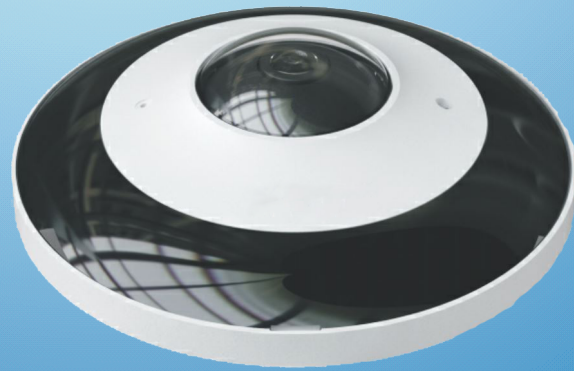


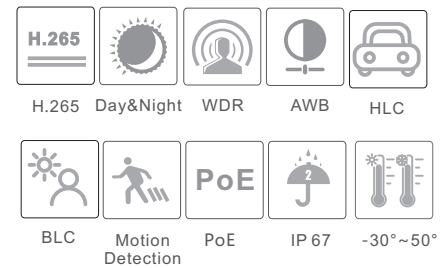
CAMERA

VSC IPT6FOE2

6MP Network IR Water-Proof
Fisheye Camera



- 6MP H.265 full real time coding
- Effective pixels: 2160 × 2160;
- ICR auto switch, true day / night
- 20 ~ 30m IR night view distance
- 3D DNR, digital WDR, HLC, BLC and ROI coding
- One CVBS output
- 1CH audio input, 1CH audio output, 1CH built-in MIC
- Built-in micro SD card slot, up to 128GB
- Hardware reset; RS485
- 1CH alarm input; 1CH alarm output
- DC12V/PoE power supply
- Support smart phone, iPad, remote monitoring
- IP67 ingress protection
- Support three streams



visarcctv.com

For more information, please visit our website

SPECIFICATIONS

Model	VSC IPT6FOE2
Specifications	
Camera	
Image Sensor	1 / 2.9 "6MP progressive scan CMOS
Effective Pixels	2160×2160
Electronic Shutter	1 / 25 s ~ 1 / 100000 s
Min. Illumination	0.068lux@F2.0, AGC ON; 0 lux with IR
Lens	1.07mm @F2.5, horizontal field of view : 180° (wall mounting) 360° (ceiling mounting)
Day & Night	ICR
Wide Dynamic Range	Digital WDR
BLC	Yes
HLC	Yes
Digital NR	3D DNR
Slow Shutter	Yes
Compression Standard	
Video Compression	H.265 / H.264 / MJPEG
Encoding Type	VBR (five levels adjustable) / CBR
Smart Encoding	Support low bitrate, low delay; support ROI coding & SVC technology; support self-adaptive transmission bitrate as the network environment
Bit Rate	128 Kbps ~ 16 Mbps
Audio Compression	G711A / U
Audio Bit Rate	8Kbps ~ 48 Kbps
Image	
Main Stream	① Fisheye+panorama+3 PTZ 50Hz: 25fps@(2160 × 2160/1920×1920/1440×1440), 25fps@(1920 × 1080), 25fps@(960× 540)*3 60Hz: 30fps@(2160 × 2160/1920×1920/1440×1440), 30fps@(1920 × 1080), 30fps@(960× 540)*3 ② Fisheye+ 4 PTZ 50Hz: 25fps@(2160 × 2160/1920×1920/1440×1440), 25fps@(960× 540)*4 60Hz: 30fps@(2160 × 2160/1920×1920/1440×1440), 30fps@(960× 540)*4
Max. Image Size	2160 * 2160
ROI	Each ROI to be configured separately
Image Settings	ROI, Saturation, Brightness, Chroma, Contrast, Wide Dynamic, Sharpen, NR, etc. adjustable through client software or web browser
Interfaces	
Network	RJ45
Video Output	CVBS output (BNC × 1)
Audio	1CH audio input; 1CH audio output; 1CH built-in MIC
Storage	Built-in micro SD card slot; up to 128GB
Hardware Reset	Yes
Alarm	1CH alarm input; 1CH alarm output
RS 485	Yes
Functions	
Remote Monitoring	Web browsing, CMS remote control
Online Connection	Support simultaneous monitoring for up to 11 users; Support multi-stream real time transmission
Network Protocol	UDP, IPv4, IPv6, DHCP, NTP, RTSP, PPPoE, DDNS, SMTP, FTP, SNMP, UPnP, HTTP
Interface Protocol	ONVIF, GB-T/28181-2011
Storage	Network remote storage; micro SD card storage
Smart Alarm	Motion detection; Sensor alarm

General function	Watermark, IP address filtering, video mask
PoE	Yes
IR Distance	20 ~ 30 m
Ingress Protection	IP67
Others	
Power Supply	DC12V/PoE
Power Consumption	< 12W
Operating Environment	- 30 °C ~ 50 °C (-22°F~122°F) Humidity: less than 95 % (non-condensing)
Dimensions (mm)	Φ 130 × 41
Weight (net)	Approx. 0.45KG
Installation	Ceiling mounting(wall mounting available with the junction box and bracket)

DIMENSIONS

